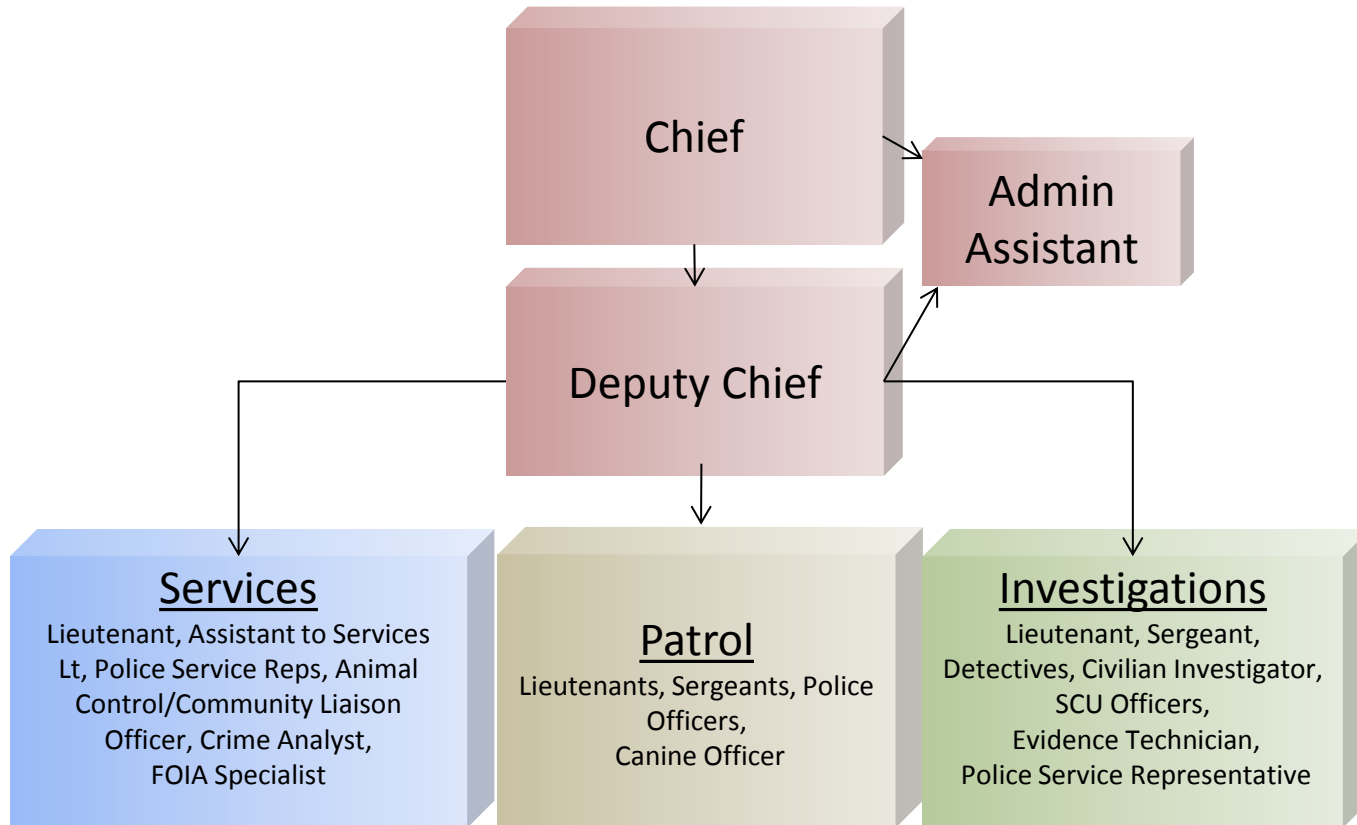
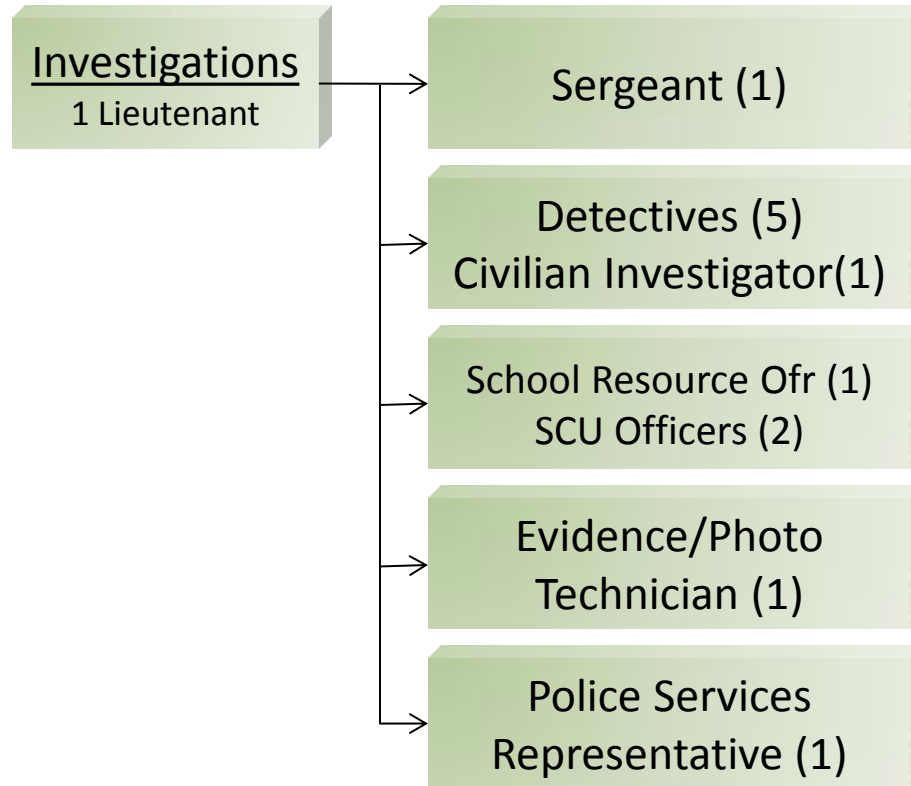


# Administration Flowchart

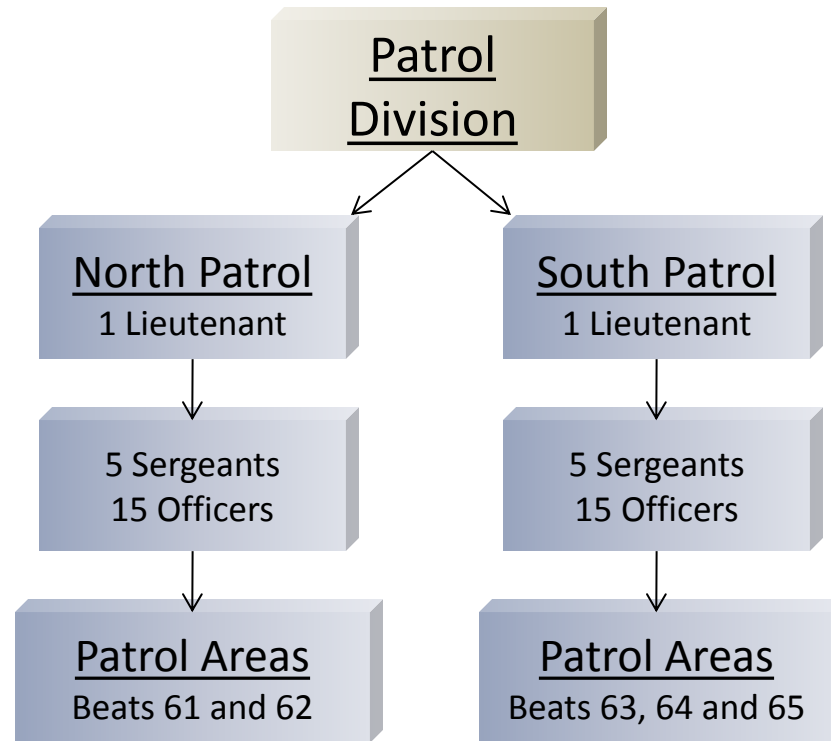


# CID Flowchart



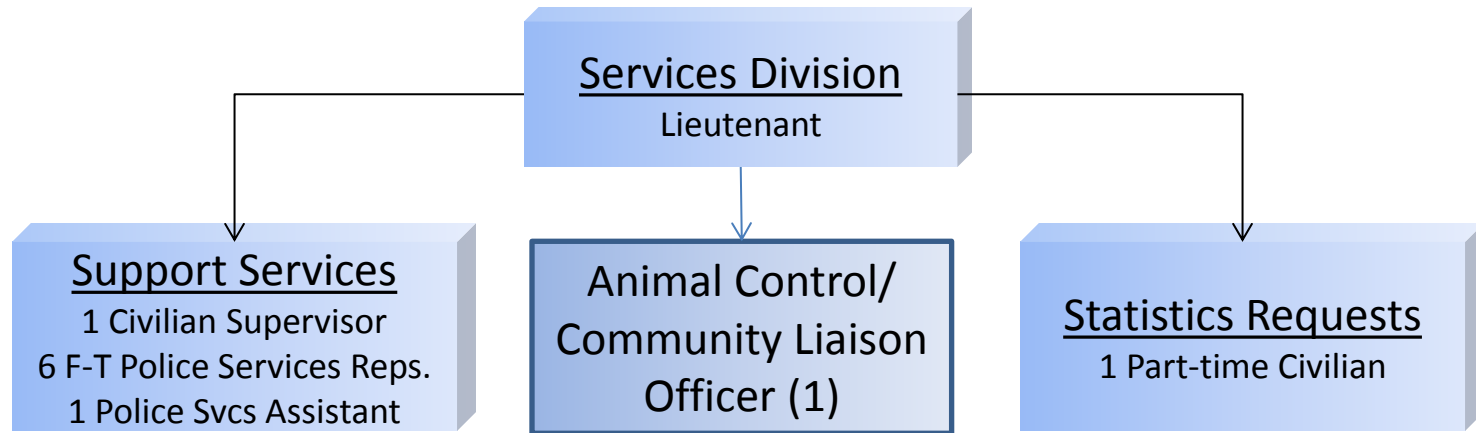
**Criminal Investigations Division (CID)** - Provides follow-up investigation, if needed, on felony cases reported to the department. CID handles high profile or major case investigations, multi-jurisdictional cases, and evidence/seizures of the department. CID provides these services with 10 sworn officers, three civilian employees, and 8 vehicles.

# Patrol Command Flowchart



**Patrol Division** - The first responder to all requests for police service. This division provides the full-range of police services such as: crime prevention, traffic enforcement, accident investigation, criminal investigation enforcement of local, state and federal criminal laws, the apprehension of criminal violators in Urbana and animal control services. This is a twenty-four hour a day, seven-day-a-week operation, staffed with 42 sworn officers.

# Services Flowchart



**Support Services Division** - Maintains the department's record system and information management system, provides statistical analysis for the department, is a backup dispatch center, provides Teleserve service (reporting of minor crimes or lost/mislaid property via telephone) to the public and is the primary contact point for public access to the department. The front desk is an eighteen-hours a day, seven days a week operation that is staffed with 6 civilian Police Service Representatives and 1 Civilian Supervisor. The services division also provides School Crossing services for the department. This division is staffed with 1 sworn officer, 9 civilian employees, and 1 part-time position.